

Low Phase Noise, LVPECL VCXO (for 130MHz to 200MHz Fundamental Crystals)

FEATURES

- Advanced non multiplier VCXO Design for High Performance Crystal Oscillators
- Input/Output Range: 130MHz to 200MHz
- Very Low Phase Noise: -149dBc @100kHz at 155.52MHz
- Very low Phase Jitter: <100fs RMS
- High Pull Range: ± 140 ppm
- Linearity: 5%
- Integrated Variable Capacitors
- Complementary LVPECL Outputs
- Power Supply: 3.3V $\pm 10\%$
- Available in Die or Wafer Form

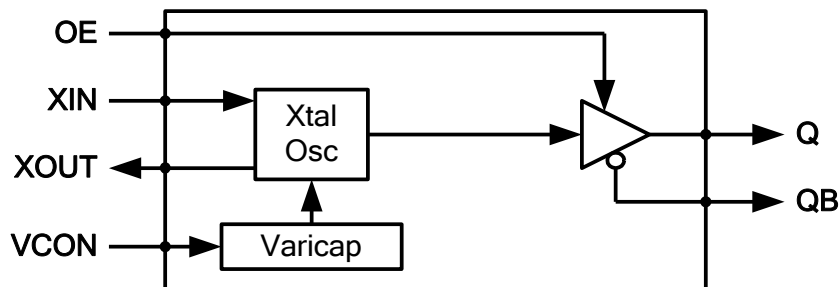
DESCRIPTION

The PL586-05/-08 is a non-multiplier VCXO IC specifically designed to pull fundamental mode crystals from 130MHz to 200MHz. This IC achieves a typical pull range of ± 140 ppm with 5% linearity. The phase noise performance, with <100fs phase jitter, makes this an ideal solution for all high end clocking applications such as SONET, WiMax, CPRI, OBSAI, Fiber Channel, and any application where performance and quality are required.

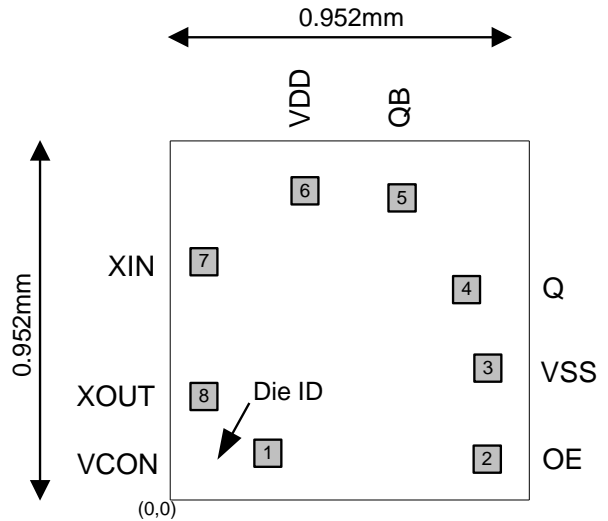
DIE SPECIFICATIONS

Name	Value
Size	952 micron x 952 micron
Reverse side	GND
Pad dimensions	80 micron x 80 micron
Thickness	8 mil

BLOCK DIAGRAM



DIE CONFIGURATION



OUTPUT ENABLE LOGIC PL586-05

OE State (Pad 4)	Output Buffers State
0	Outputs Tri-Stated
1 (Default)	Outputs Enabled

* Internal 60K Ω pull-up resistor

OUTPUT ENABLE LOGIC PL586-08

OE State (Pad 4)	Output Buffers State
0 (Default)	Outputs Enabled
1	Outputs Tri-Stated

* Internal 60K Ω pull-down resistor

Low Phase Noise, LVPECL VCXO (for 130MHz to 200MHz Fundamental Crystals)
PAD ASSIGNMENT

Pad #	Name	X (μm)*	Y (μm)*	Description
1	VCON	-194	-365	Voltage Control input
2	XOUT	-372	-190	Crystal output connection
3	XIN	-372	158	Crystal input connection
4	VDD	-117	329	V _{DD} connection
5	QB	140	315	Complementary LVPECL output
6	Q	315	75	LVPECL output
7	VSS	373	-127	GND connection
8	OE	373	-373	Output enable pin. Internal pull up (-05) or pull down (-08).

* **Note:** Referenced to center of the die.

ELECTRICAL SPECIFICATIONS
1. Absolute Maximum Ratings

PARAMETERS	SYMBOL	MIN.	MAX.	UNITS
Supply Voltage	V _{DD}		4.6	V
Input Voltage, DC	V _I	V _{SS} -0.5	V _{DD} +0.5	V
Output Voltage, DC	V _O	V _{SS} -0.5	V _{DD} +0.5	V
Storage Temperature	T _S	-65	150	°C
Ambient Operating Temperature	T _A	-40	85	°C
HBM ESD Protection		2,000		V

Exposure of the device under conditions beyond the limits specified by Maximum Ratings for extended periods may cause permanent damage to the device and affect product reliability. These conditions represent a stress rating only, and functional operations of the device at these or any other conditions above the operational limits noted in this specification is not implied. *Operating temperature is guaranteed by design. Parts are tested to commercial grade only.

Low Phase Noise, LVPECL VCXO (for 130MHz to 200MHz Fundamental Crystals)
2. Voltage Control Crystal Oscillator

PARAMETERS	SYMBOL	CONDITIONS	MIN.	TYP.	MAX.	UNITS
VCXO Stabilization Time *	$T_{VCXOSTB}$	From power valid			10	ms
VCXO Pullability *		XTAL $C_1 = 6.8\text{fF}$, $C_0/C_1 = 270$ $0\text{V} \leq V_{CON} \leq V_{DD}$ (25°C)		± 160		ppm
		XTAL $C_1 = 5.5\text{fF}$, $C_0/C_1 = 260$ $0\text{V} \leq V_{CON} \leq V_{DD}$ (25°C)		± 140		ppm
		XTAL $C_1 = 5.5\text{fF}$, $C_0/C_1 = 260$ $0.3\text{V} \leq V_{CON} \leq 3.0\text{V}$ (25°C)		± 130		ppm
Varicap Control Range *		$V_{CON} = 0$ to V_{DD}	0		3.3	V
Linearity *		$0.0\text{V} \leq V_{CON} \leq 3.3\text{V}$			10	%
		$0.3\text{V} \leq V_{CON} \leq 3.0\text{V}$			5	%
VCON Input Impedance *		DC Input resistance	10			MΩ
VCON Modulation BW *		$0\text{V} \leq V_{CON} \leq V_{DD}$, -3dB		30		kHz

Note: Parameters denoted with an asterisk (*) represent nominal characterization data and are not production tested to any specific limits.

3. Crystal Specifications

PARAMETERS	SYMBOL	CONDITIONS	MIN.	TYP.	MAX.	UNITS
Crystal Resonator Frequency	F_{XIN}	Fundamental Mode, AT cut	130		200	MHz
Crystal Loading Rating	$C_{L(xtal)}$	$V_{CON} = 1.65\text{V}$		5.5		pF
Shunt Capacitance	C_0				2.5	pF
Recommended ESR	R_E	$C_0 \leq 2.5\text{pF}$			30	Ω

4. General Electrical Specifications

PARAMETERS	SYMBOL	CONDITIONS	MIN.	TYP.	MAX.	UNITS
Supply Current	I_{DD}	Standard LVPECL Loading (See LVPECL Levels Test Circuit, page 4)			50	mA
Operating Voltage	V_{DD}		2.97	3.3	3.63	V
Output Clock Duty Cycle		@ $V_{DD} - 1.3\text{V}$ (See LVPECL Transition Time Waveform, page 4)	45	50	55	%
Short Circuit Current				± 50		mA

Low Phase Noise, LVPECL VCXO (for 130MHz to 200MHz Fundamental Crystals)

5. Jitter Specifications

PARAMETERS	CONDITIONS	MIN.	TYP.	MAX.	UNITS
Period Jitter RMS	At 155.52MHz, with capacitive decoupling between V _{DD} and GND. Over 10,000 cycles		2.5		ps
Period Jitter pk-to-pk			20		
Integrated Jitter RMS at 155.52MHz	Integrated 12 kHz to 20 MHz		90		fs

6. Phase Noise Specifications

PARAMETERS	FREQUENCY	@10Hz	@100Hz	@1kHz	@10kHz	@100kHz	@1MHz	@10MHz	UNITS
Phase Noise, relative to carrier	155.52MHz	-48	-77	-105	-132	-149	-155	-158	dBc/Hz

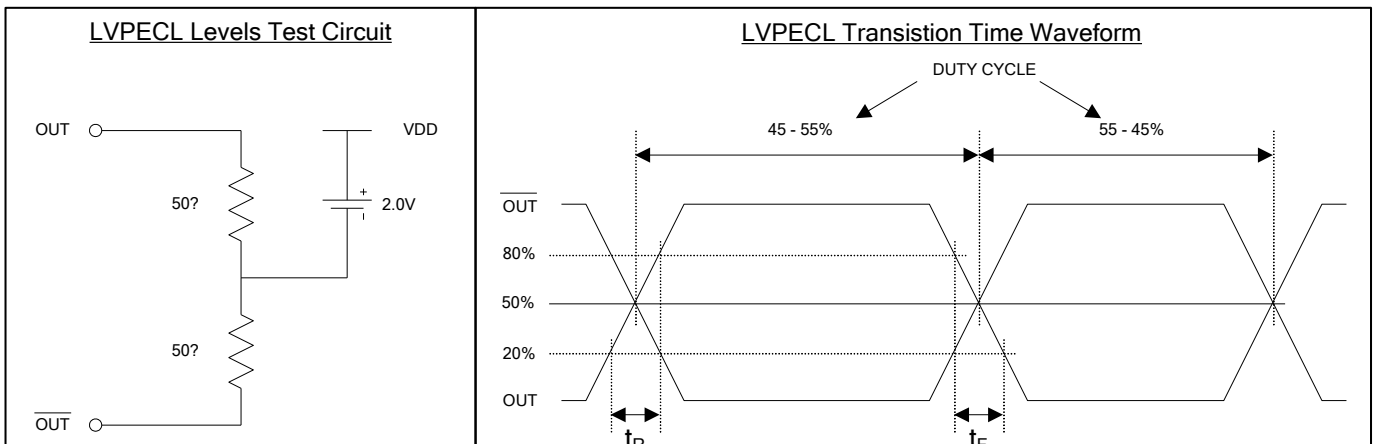
Note: Phase Noise measured at VCON = 0.3V to 3.0V.

7. LVPECL Electrical Characteristics

PARAMETERS	SYMBOL	CONDITIONS	MIN.	TYP.	MAX.	UNITS
Output High Voltage	V _{OH}	R _L = 50 Ω to (V _{DD} - 2V) (see figure)	V _{DD} - 1.025	V _{DD} - 0.950	V _{DD} - 0.880	V
Output Low Voltage	V _{OL}		V _{DD} - 1.810	V _{DD} - 1.700	V _{DD} - 1.620	V

8. LVPECL Switching Characteristics

PARAMETERS	SYMBOL	CONDITIONS	MIN.	TYP.	MAX.	UNITS
Clock Rise Time	t _r	@20/80% of output waveform			300	ps
Clock Fall Time	t _f	@80/20% of output waveform			300	ps





Low Phase Noise, LVPECL VCXO (for 130MHz to 200MHz Fundamental Crystals)

ORDERING INFORMATION

For part ordering, please contact our Sales Department:

2180 Fortune Drive, San Jose, CA 95131, USA

Tel: (408) 944-0800 Fax: (408) 474-1000

PART NUMBER

The order number for this device is a combination of the following:

Part number, Package type and Operating temperature range

Part Number PL586-0X XX

Packaging Option

D = Die

W = Wafer

Temperature Range

C=Commercial (0°C to 70°C)

Order Number	Packaging
PL586-05DC PL586-08DC	Die – Waffle Pack
PL586-05WC PL586-08WC	Wafer

Micrel Inc., reserves the right to make changes in its products or specifications, or both at any time without notice. The information furnished by Micrel is believed to be accurate and reliable. However, Micrel makes no guarantee or warranty concerning the accuracy of said information and shall not be responsible for any loss or damage of whatever nature resulting from the use of, or reliance upon this product.

LIFE SUPPORT POLICY: Micrel's products are not authorized for use as critical components in life support devices or systems without the express written approval of the President of Micrel Inc.