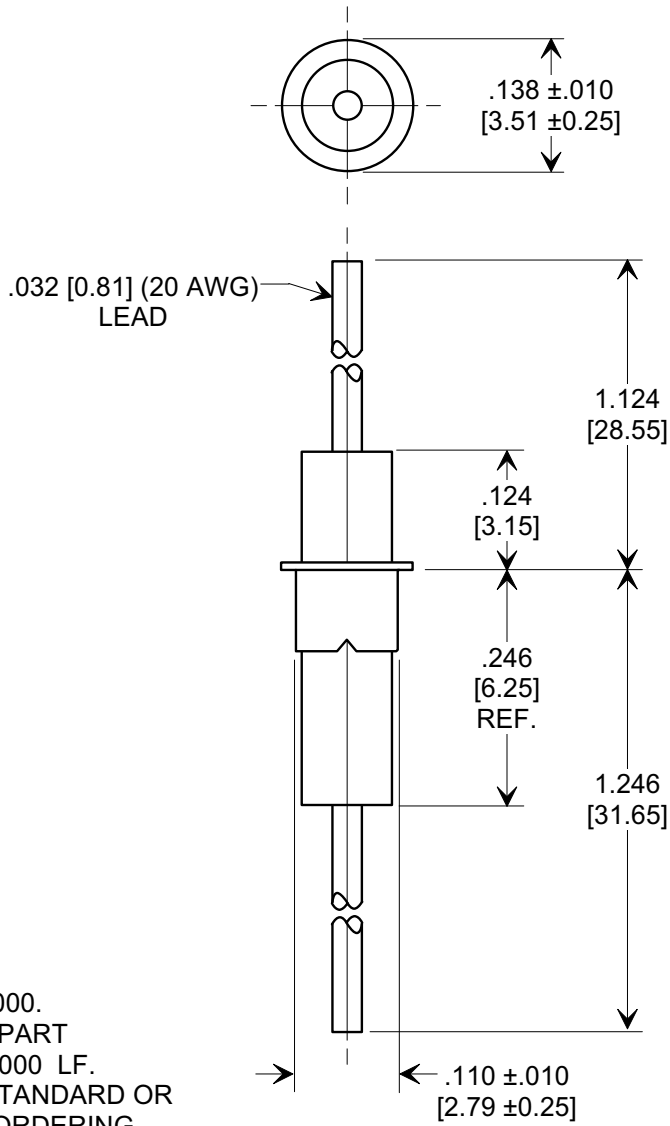
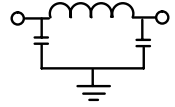
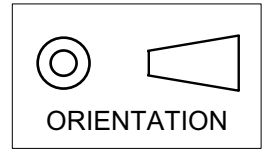


**MARKETING SALES DRAWING**  
**DIMENSIONS IN INCHES - DO NOT SCALE THIS DRAWING**  
**DIMENSIONS IN METRIC - [ ]**

Electrical Testing  
per Tusonix standard  
test plans and Mil-Std-202  
Test Methods.



**NOTES:**

1. TUSONIX STANDARD PART  
NUMBER: 4100-000.  
TUSONIX RoHS COMPLIANT PART  
NUMBER: 4100-000 LF.  
CUSTOMER MUST SPECIFY STANDARD OR  
RoHS PART NUMBER WHEN ORDERING.
2. LEAD FINISH: STANDARD PART #: SILVER PLATED.  
RoHS PART #: SILVER PLATED.
3. EYELET FINISH: STANDARD PART #: 60/40 SOLDER PLATED.  
RoHS PART #: SILVER PLATED.
4. PART MARKING: STANDARD, NO MARKING.  
RoHS PART: GREEN DOT ON INSULATION BAND,  
TYPICAL LOCATION.

MIN. CAP. pF	WORKING VOLTAGE (WVDC)		CURRENT Idc.	I.R. MIN. @ 100 (VDC.)	DWV (VDC)	MINIMUM NO LOAD INSERTION LOSS (dB) AT 25°C PER MIL-STD-220			
	85°C	125°C				10 MHz	100 MHz	1 GHz	10 GHz
1500	250	125	10A	10 G	500	6	45	60	60

<b>X-2015 Rev-0</b>	<b>REVISION RECORD</b>						--TOLERANCES-- Unless Otherwise Specified	Title <b>EYELET STYLE EMI FILTER</b>		
	0	1	2	3	4	5				
	Original Release C.O.	WAS SK 6644-060-S. L.E. 01-13-84	DIMS & TOLS REV B. RELEASED. L.E. 01-08-85	CURRENT UNIT "A" ADDED L.E. 08-20-85	RDN TO COMP FMT. & METRIC ADDED. S.M. 05-17-00	20000517-4-01	ADDED I.R. & DWV. S.M. 10-11-04	20041011-3-01	ADDED NOTES. S.M. 06-06-5	20050526-4-05
							DECIMAL ± .031 [0.79]	Drawn	S.M. 05-17-00	Scale 5 X
							ANGLES ±	Approved	B.M. 05-17-00	
							<b>TUSONIX</b> TUCSON, ARIZONA	<b>A</b>	<b>4100-000</b>	