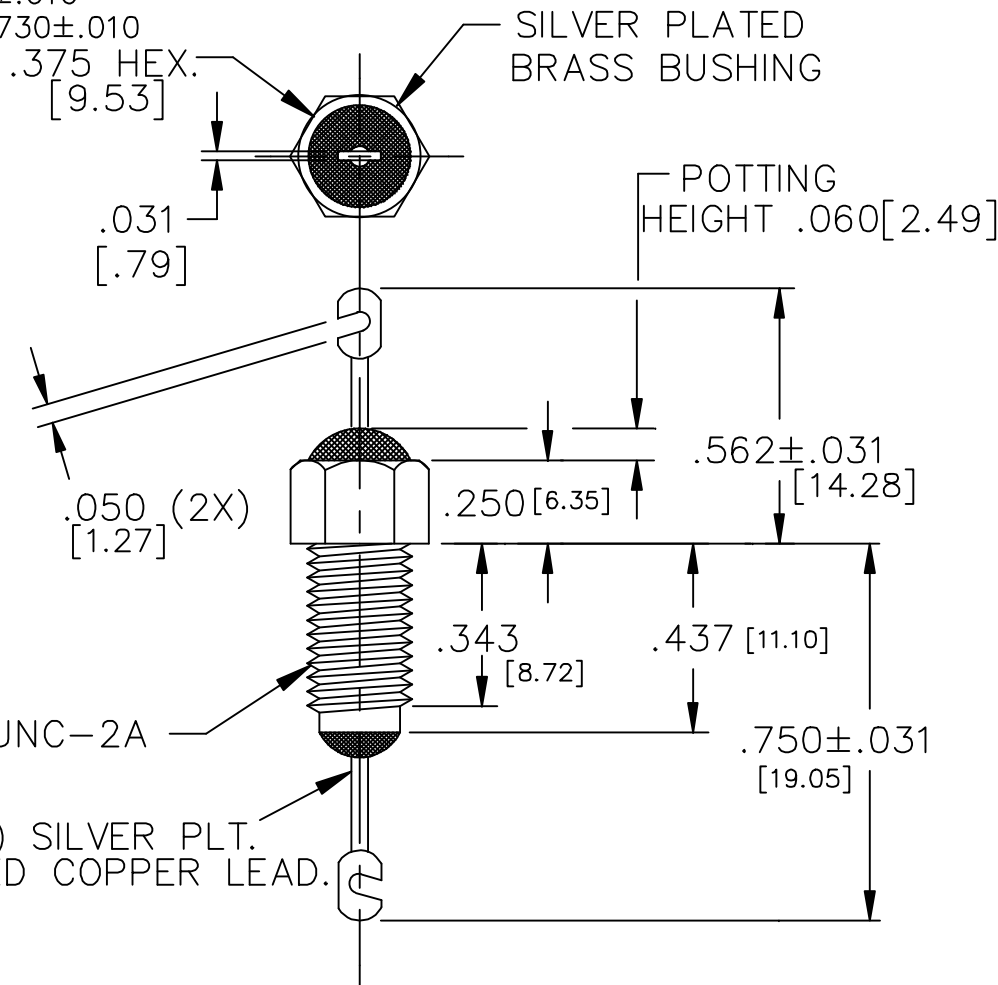


NOTES:

1. HARDWARE IS INCLUDED
2. MAXIMUM POTTING TORQUE=7LBS-IN
3. SUGGESTED MOUNTING HOLE  $\phi$ .328[8.34]
4. PRE FLATTEN/NOTCH DIMENSIONS

5. THIS IS A LEAD FREE PART.
6. MAX REFLOW IS 245°C FOR 5 SEC.

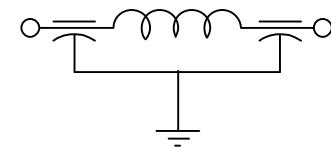
TOP-.542±.010  
 BOTTOM-.730±.010



#15 AWG.( $\phi$ .057) SILVER PLT.  
 TIN/SILVER COATED COPPER LEAD.

LEAD FINISH: TIN/SILVER	
BUSHING FINISH: SILVER	
CAPACITANCE	3000 pF GMV.
TEMP. RANGE	-55°C TO 125°C
CURRENT	25 AMP MAX.
WORKING VOLTAGE	85°C 1000VDC MAX. 125°C 500 VDC MAX.
D.C. RESISTANCE	.01ohms MAX.
MIN. I.L. PER MIL-STD-220 AT 25°C NO LOAD	
FREQ. MHz	I.L. (db)
1	---
10	10
100	55
1 GHz/10 GHz	70

SCHEMATIC



MARKING:

PART: S1202F052 XXX DATE CODE  
 USE ANTI-STATIC BAGS FOR ALL SHIPMENTS

BAG: 1202F-052  
 XXXX DATE CODE  
 XXX QTY./BAG  
 (50/ BAG MAX.)

											01	00	REV. NO.	TOLERANCES UNLESS OTHERWISE SPECIFIED
											CN 30481-CPD	CN 18620-CPD	CHANGE NOTICE	Fractions ± 1/64
														Dec. .xx±
														Dec. .xxx± .010
														Angles ±0° 30'
														CODE IDENT. NO. DLSP2

ERIE, FAIRVIEW  
 PENNSYLVANIA

SPECTRUM CONTROL INC.

Dwn. KNOWLTON	Description
Date 09-18-06	FLTR., SING., Pi, BSHG.
Engr. R. Struchen	1202F-052
Scale NONE	