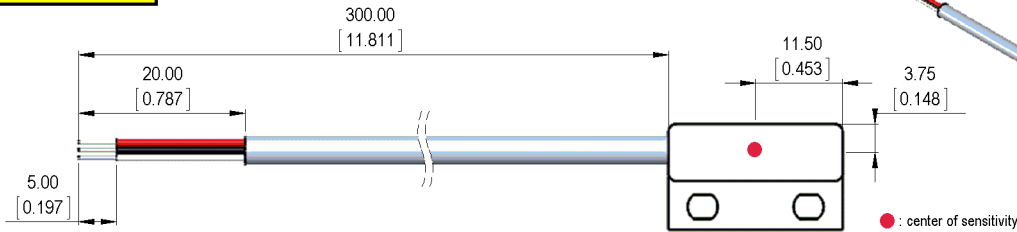


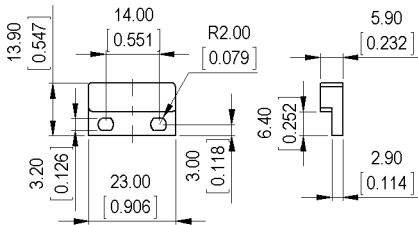


**Dimensions mm[inch]**  
 tolerances acc. to DIN ISO 2768-m  
 Toleranzen gem. DIN ISO 2768-m

**Isometric**  
 Scale 1:2  
 Maßstab 1:2



**Housing**

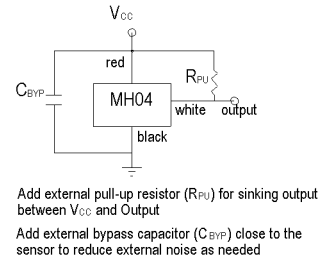


**Cable**  
 round cable UL/CSA LIYY AWG 26, grey  
 color of wires: red, black, white

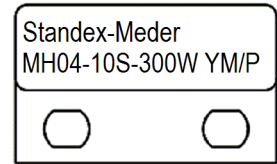
**Terminals/Connector**

Ends tinned  
 red: V<sub>CC</sub>  
 black: Ground  
 white: Output

**Typical External Circuit**



**Marking**  
 according to EN60062/factory code  
 gem. EN60062/Fertigungsstätte



Magnetic properties	Conditions	Min	Typ	Max	Unit
Hall Type		Micropower Switch			
Operation		Omnipolar			
Output On	T=25C and VDD=2.75V		37		Gauss
Output Off	T=25C and VDD=2.75V		31		Gauss
Hysteresis	T=25C and VDD=2.75V		6		Gauss

Technical data	Conditions	Min	Typ	Max	Unit
Supply voltage		2.5	2.75	3.5	VDC
Supply current				2	mA
Operating temperature range		-40		85	°C
Storage temperature		-60		105	°C

Cable specification	Conditions	Min	Typ	Max	Unit
Cable type		round cable			
Strand number		3			
Structure of strands		AWG 26 7x0,16			
Insulation single strands		PVC			
Strands color		red,black,white			
Insulation cable sheath		PVC			
Sheath color	DIN 47100	grey			
Outer diameter of a cable jacket			3.8		mm

General data	Conditions	Min	Typ	Max	Unit
Tightening torque	Screw M3 ISO 1207 Disk ISO 7089			0.5	Nm
Mounting advice		decreased switching distances when mounted near iron			
Mounting advice		magnetically conductive screws must not be used			
Case color		white			
Sealing compound		Polyurethan			
Remark		direct custom inquiries to sales@standexmeder.com			

Modifications in the sense of technical progress are reserved

Designed at: 01/29/15 Designed by: SDAVIS  
 Last Change at: 04/29/15 Last Change by: SDAVIS

Approval at: 02/13/15 Approval by: ABURGESS  
 Approval at: 04/29/15 Approval by: ABURGESS

Rev. No.: 02