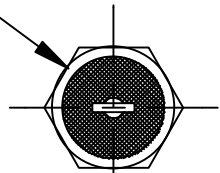


.375 HEX.
[9.53]



.060 MAX., POTTING HEIGHT
2 PL. [1.52]



.562 ± .031
[14.28]

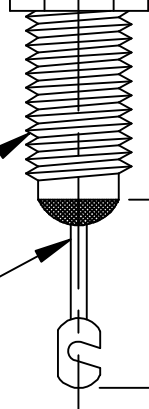
.250 [6.35]

.437 [11.10]

.750 ± .031
[19.05]

5/16-32UNEF-2A

#15 AWG.(ø.057)



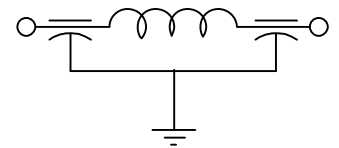
NOTES:

SUGGESTED MTG HOLE .328 DIA.
HARDWARE IS INCLUDED.
MAXIMUM MOUNTING TORQUE=7LBS-IN
PRE FLATTEN/NOTCH DIMENSIONS
TOP-.542±.010
BOTTOM-.730±.011
THIS IS A LEAD FREE PRODUCT
MAX REFLOW IS 245° FOR 5 SEC.

LEAD FINISH: TIN/SILVER	
BUSHING FINISH: SILVER	
CAPACITANCE	3000 pF MIN.
TEMP. RANGE	-55°C/ + 125°C
CURRENT	25 AMP MAX.
WORKING VOLTAGE	125°C 125VAC/400Hz 125°C 500 VDC MAX.
D.C. RESISTANCE	.01ohms MAX.
MIN. I.L. PER MIL-STD-220 AT 25°C NO LOAD	
FREQ. MHz	I.L. (db)
1	---
10	10
100	55
1 GHz	70
10 GHz	70



SCHEMATIC



MARKING:

PART: S1202F 054

BAG: 1202F-054
XXXX DATE CODE
XXX QTY./BAG
(50/ BAG MAX.)

					01	00	REV. NO.	TOLERANCES UNLESS OTHERWISE SPECIFIED
					CN #15200	CN 30462-CPD	CHANGE NOTICE	Fractions ± 1/64
								Dec. .xx±
								Dec. .xxx± .010
								Angles ±0° 30'
								CODE IDENT. NO. DLSP2



FAIRVIEW
PENNSYLVANIA

Dwn. KRDZALIC	Description
Ckd. 8-17-15	FLTR., SING., Pi, BSHG.
Apvd. B.DEVINE	1202F-054
Scale NONE	